

JANUARY 1, 2023, NOTICE TO MARINERS: MARKERS # 1,2 & 4 ARE CURRENTLY NOT ON STATION

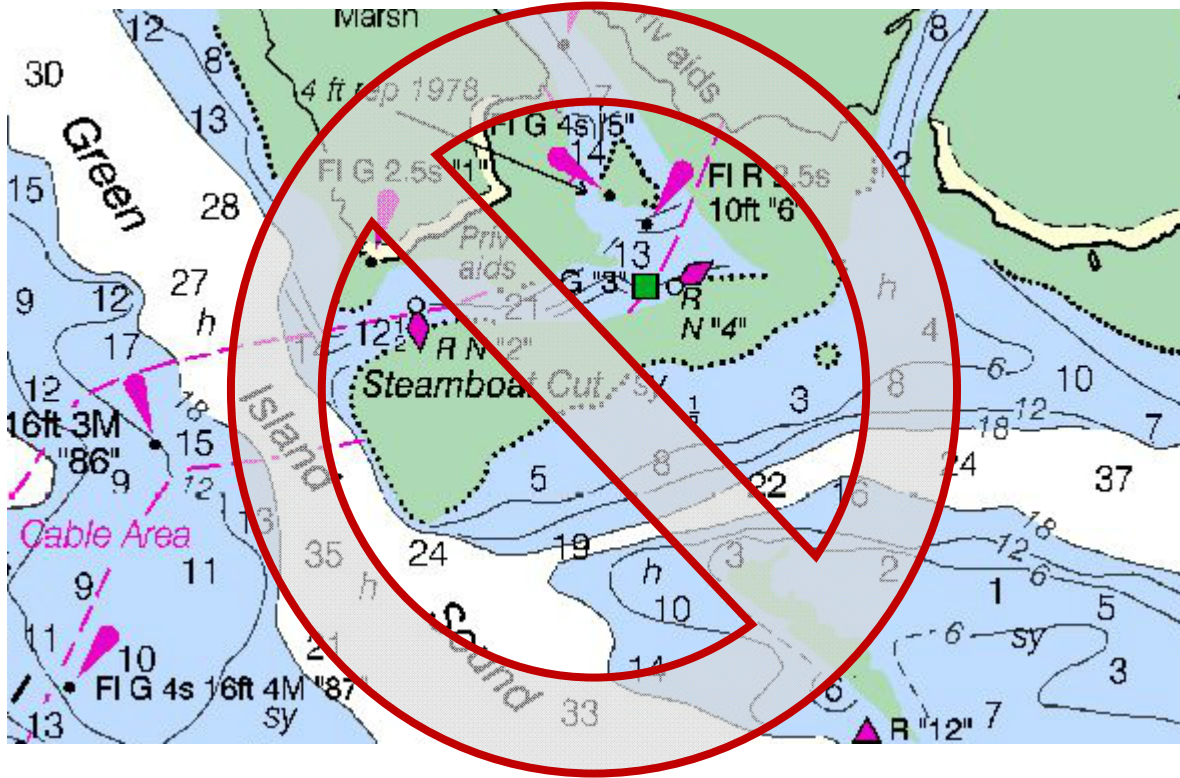
Entrance to Delegal Creek Marina



Delegal Creek aids are privately maintained and are “Red Right Returning”

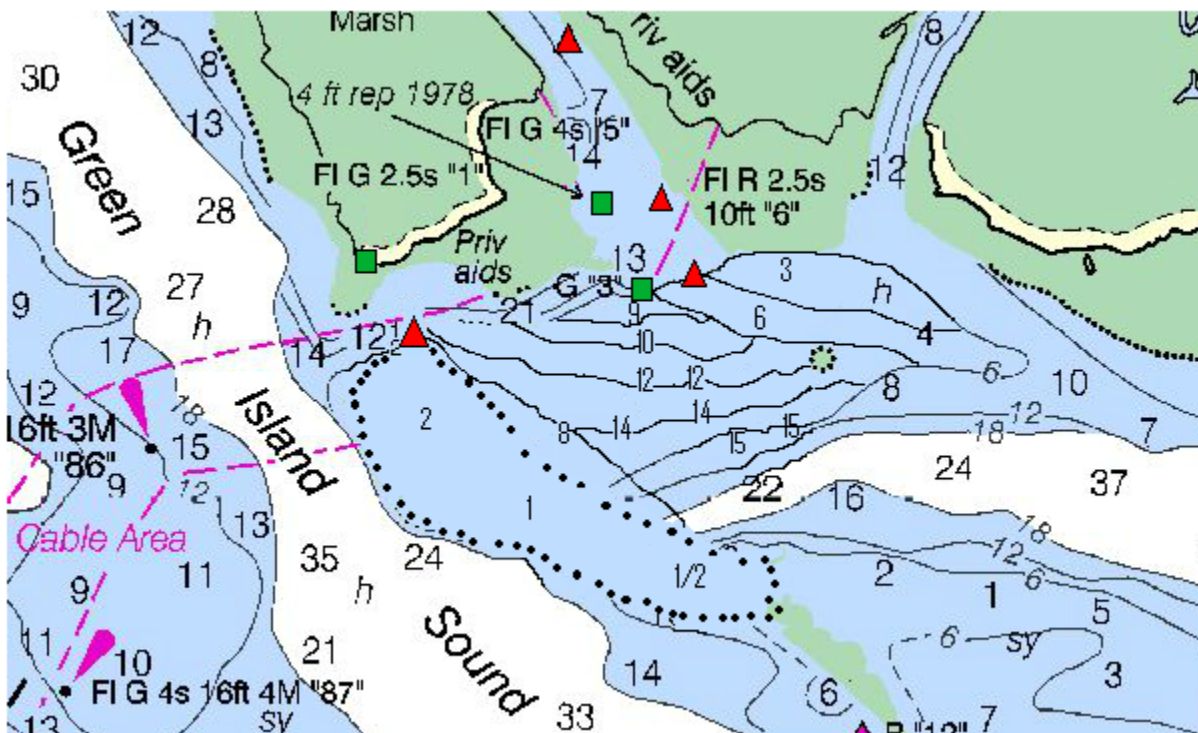
NOAA Chart

Last known update 1900-1939



Local Knowledge

2012



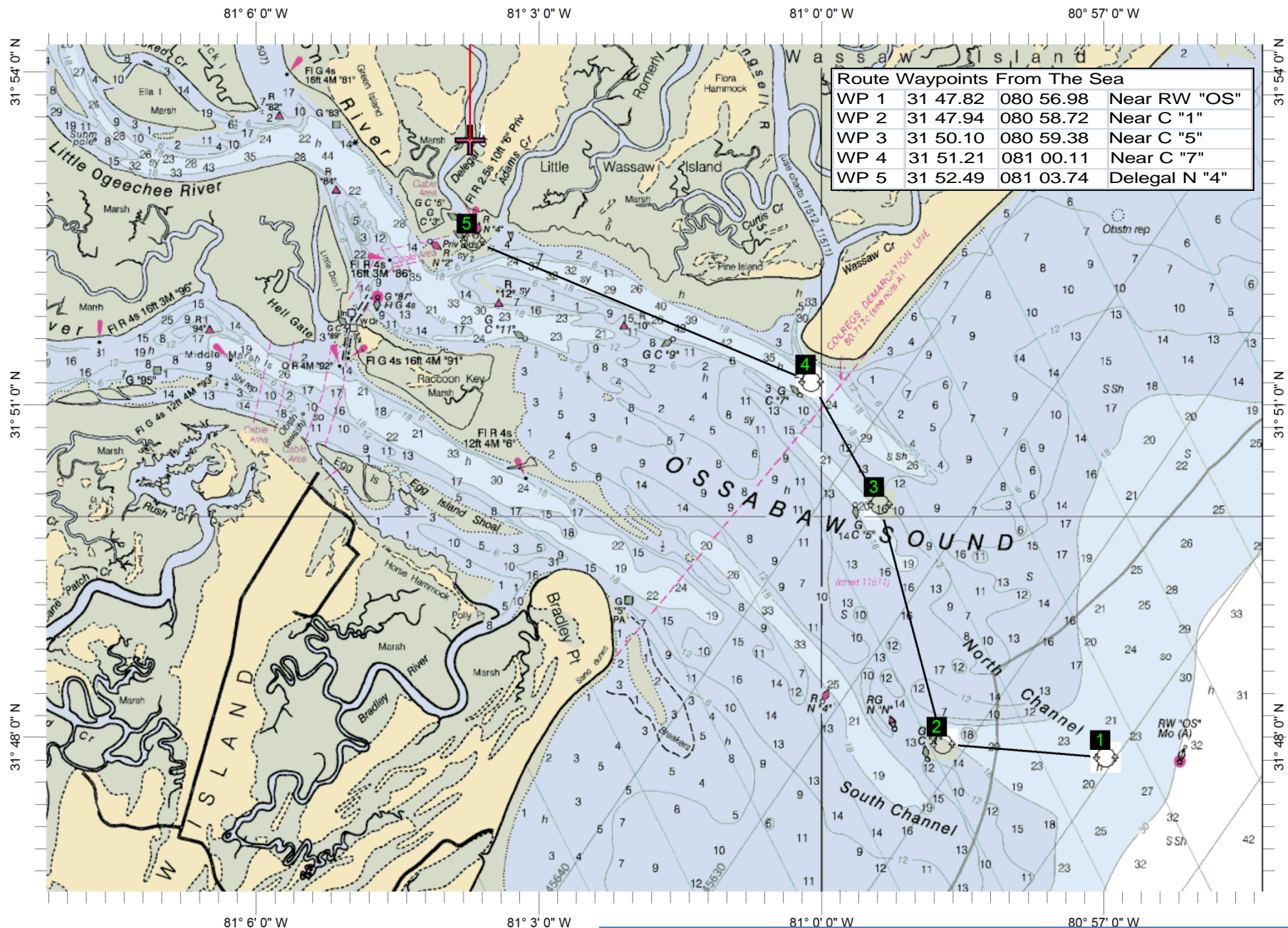


Chart Name: TYBEE ISLAND TO DOBOY SOUND
 Chart ID: 11509_1
 Top Left: 31° 54' 14" N 81° 8' 13" W
 Bottom Right: 31° 46' 36" N 80° 55' 18" W

Entrance to Delegal Creek From Ossabaw Sound
 Minimum 10' at Mean Low Water all the way

Delegal Creek Navigational Instructions From the ICW

Mile 601

Note: The entrance markers to Delegal Creek are “Red Right Returning”

1. Get a visual on ICW 86. At a heading of 060° from ICW 86 you should see Green Daymarker #1 and Red Nun #2. There is deep water between Red Nun #2 and shore. **January 1, 2023 - Markers #1 & #2 are Not on station.**
2. Leave Red Nun #2 to starboard, heading about 100° for approximately 700 yards to Green Daymarker #3. Favor the Green (shore) side of the channel.
3. Take Green Daymarker #3 to port, leave Red Nun #4 to starboard, making a rounded turn to port. **January 1, 2023 - Marker #4 is Not on station.**
4. Head into the channel between Red Daymarker #6 (to starboard) and Green Daymarker #5 (to port). This is the shallowest part of the channel.
5. You will see 2, diamond shaped, “Caution” markers on either side of the channel. They show shoals that are outside the channel.
6. Passing Green Daymarker #5, Head for Red Daymarker #8, following the middle of the creek.
7. Follow mid-channel past Green Daymarker #7 (to port) to the marina.

This passage should provide minimum 3 ½ to 4 foot depths, at low tide, and 6 ½ to 7 foot depths at mid tide.

Delegal Creek Navigational Instructions From the Ocean – Ossabaw Sound

Note: All markers are “Red Right Returning”

This is an entry using a modified version of the North Channel in to Ossabaw Sound per chart 11511. The soundings on this chart are way out of date. **NOTE:** The island shown on most charts at the mouth of Delegal Creek no longer exists.

1. Get on the line between RW “OS” and Green Can #1. You can get on the line about 1 mile in (about half way) from “OS”.
2. Head straight for Green Can #1 and turn right toward Green Can #5 as soon as you arrive at C #1. Do not go all the way to the RG N “N” bifurcation buoy.
3. Stay at least 1 tenth of a mile to the right (channel side) of the line between the green cans from here on in.
4. At Green Can #5 head for Green Can #7 and, again, leave it a 1 to 2 tenths of a mile on your port. There is about 8-10’ at low water next to the buoy but much more in the channel.
5. Now you can head for the waypoint for Delegal Red Nun #4 which is at 31 52.49 and 81 03.74. The course will be about 300 degrees.
6. You will pass Green Can #9 (again, leave it well to port) and see a Red Daymarker (R #10) way off to port. Ignore the red day mark it as it marks the official North Channel. From here you are using local knowledge.
7. Keep heading for Red Nun #4. You will see the other day marks at the Delegal entrance and Green Daymarker #3 will appear slightly to the right of Red Nun #4. You should have at least 15’ at low tide all along this line.
8. As you approach Red Nun #4, your chart plotter will gag because it looks like you are going over an island. Have faith. Depth here is 10 –15 feet at low tide.
9. When you get to Red Nun #4 turn hard to starboard to go between Red Nun #4 and Green Daymarker #3.
10. Head into the channel between Red Daymarker #6 (to starboard) and Green Daymarker #5 (to port). This is the shallowest part of the channel-3 ½ to 4 foot depths, at low tide, and 6 ½ to 7 foot depths at mid tide.
11. You will see 2, diamond shaped, “Caution” markers on either side of the channel. They show shoals that are outside the channel.
12. Passing Green Daymarker #5, Head for Red Daymarker #8, following the middle of the creek.
13. Follow mid-channel past Green Daymarker #7 (to port) to the marina.